



AGROLOG GRAIN ANALYZERS



SUPER - SERIES

AgroLog Super Series includes the new generation devices, with automatic temperature compensation for more reliable results. Superpro is equipped with a built-in grinder that grinds and compresses the grain in one operation. Superpoint is equipped with a compressor for whole grain measurements. Both solutions allow the electricity for the analysis to run through smoothly and give the most accurate result.

From field to storage, we are your partner in grain insights.



SUPERPRO WITH A BUILT-IN GRINDER

TECHNICAL SPECIFICATIONS

Measuring range (Moisture): 5 to 50% depending on crop type
Operating range (Temperature): 0 to 50 °C
Resolution: 0.1% moisture
Temperature compensation: Automatic
Weight including carrying case: 2 kg
Dimensions: 13 x 21 x 8 cm
Battery: 9 V Alkaline
Display: 2 line LCD with backlight
Accuracy: Better than +/- 0.25% In normal moisture range by using average and calibration adjustments



SUPERPOINT WHOLE GRAIN MOISTURE METER

TECHNICAL SPECIFICATIONS

Measuring range (Moisture): 5% to 45% depending on crop type
Operation range (Temperature): 0 to 50 °C
Resolution: 0,1% moisture
Temperature compensation: Automatic
Weight including carrying case: 1,6 kg
Dimensions: 13 x 21 x 8 cm
Battery: 9 V Alkaline
Display: 2 line LCD with backlight
Accuracy: Better than +/- 0.5% in normal moisture range when using average and calibration adjustments



FARM - SERIES

AgroLog Farm Series includes the pocket-sized Farmpro and Farmpoint. Farmpro utilizes its built-in grinder that grinds and compresses the sample in one operation while Farmpoint uses a compression solution for whole grains. Both devices use automatic temperature compensation for reliable results.



FARMPRO WITH A BUILT-IN GRINDER

TECHNICAL SPECIFICATIONS

Measuring range (Moisture): 5 to 50% depending on crop type
Operating range (Temperature): 0 to 50 °C
Resolution: 0.1% moisture
Temperature compensation: Automatic
Weight including carrying case: 1,9 kg
Dimension: 21 x 7,5 x 7,5 cm
Battery: 9 V Alkaline
Display: 2 line LCD
Accuracy: Better than +/- 0.25% in normal moisture range when using average and calibration adjustment



FARMPPOINT WHOLE GRAIN MOISTURE METER

TECHNICAL SPECIFICATIONS

Measuring range (Moisture): 5% to 45% depending on crop type
Operation range (Temperature): 0 to 50 °C
Resolution: 0.1% moisture
Temperature compensation: Automatic
Weight including carrying case: 1,5 kg
Dimension: 21 x 7,5 x 7,5 cm
Battery: 9 V Alkaline
Display: Digital two-line LCD
Accuracy: Better than +/- 0.5% in normal moisture range when using average and calibration adjustments

Protecting the world's harvest with innovative devices and data-driven insights.

BIO - SERIES

AgroLog Bio Series analyses the moisture and temperature of biofuels, wood pellets, and sawdust. By ensuring the correct water content in the combustion mass with our Bio Series devices, the cleanest burning and highest energy extraction is guaranteed.



BIOGUARD

TECHNICAL SPECIFICATIONS

Measuring range (Moisture): 4.5% to 67% depending on biofuel type
Operating range (Temperature): 0 to 50 °C
Resolution: 0.1% moisture
Temperature compensation: Automatic
Weight including carrying case: 1.6 kg
Dimension: 13 x 21 x 8 cm
Battery: 9 V Alkaline
Display: 2 line LCD with backlight



BIOPOINT

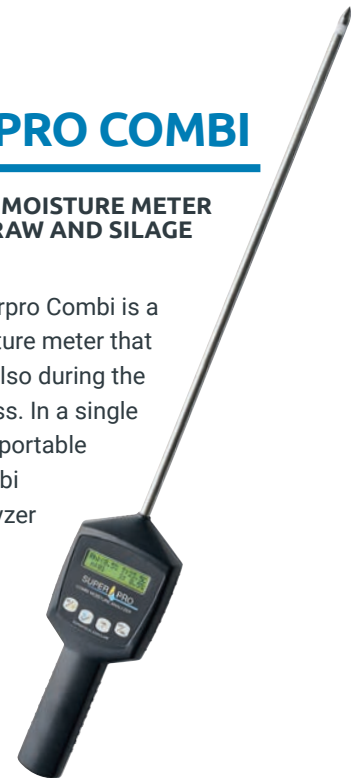
TECHNICAL SPECIFICATIONS

Measuring range (Moisture): 4.5% to 67% depending on biofuel type
Operating range (Temperature): 0 to 50 °C
Resolution: 0.1% moisture
Temperature compensation: Automatic
Weight including carrying case: 1.5 kg
Dimension: 21 x 7.5 x 7.5 cm
Battery: 9 V Alkaline
Display: Digital two-line LCD

SUPERPRO COMBI

A PORTABLE MOISTURE METER FOR HAY, STRAW AND SILAGE

AgroLog Superpro Combi is a portable moisture meter that can be used also during the storing process. In a single operation, the portable Superpro Combi moisture analyzer measures and calculates the average value of the bales.



TECHNICAL SPECIFICATIONS

Measuring range (Moisture): 8.5 to 80%
Operating range (Temperature): 0 to 70 °C
Resolution: 0.1% moisture
Probe: 50 cm stainless steel
Battery: 9 V Alkaline
Display: 2 line LCD with backlight
Accuracy: Better than +/- 1.5% In normal moisture range when using average and calibration adjustments

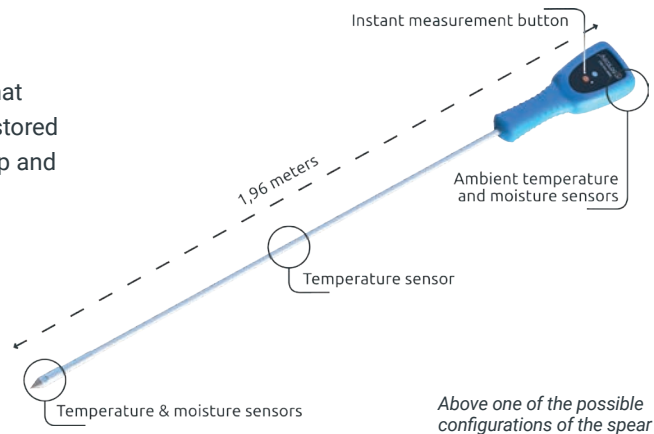


WIRELESS SENSOR SPEAR

PORTABLE WIRELESS MONITORING SYSTEM FOR GRAIN AND SEEDS

The Wireless Sensor Spear is a GSM-enabled device that accurately monitors the temperature and moisture of stored crops. Each spear displays its data on the AgroLog App and can be moved wherever it may be needed most.

The AgroLog App sends notifications when critical thresholds are reached, preventing grain loss and reducing risks.



Key features and benefits



Customizable wireless solution



Place it everywhere



Avoid damages and losses



Automatic updates every hour

AGROLOG APP

Avoid damages and losses

With the AgroLog App you are always in control of your products and storage, you get real-time insights and a historical overview of your crops.

There is a complete overview of the data collected from all devices at different times. All this information is available in the app and accessible through your smartphone.



Multiple products

Simple overview

Traceability

Customization

Create your own platform

No matter where you are or what you are doing, everything is accessible through your smartphone. You will have access to all your products in one single platform: The AgroLog App.

Easy to use

The AgroLog App has a friendly User Interface, it is interactive and well functioning. The app is available for both iOS and Android.

Avoid damages and losses

You can log temperature and moisture measurements while adding GPS location data and photos to each entry. Gain valuable insights with a historical overview of your measurements and visualize your data on an interactive map.



Download the app here



C-PRO



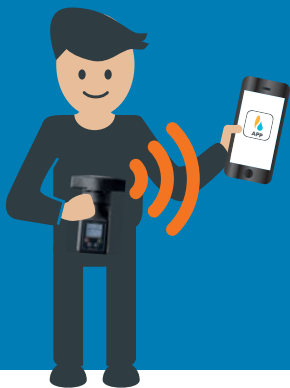
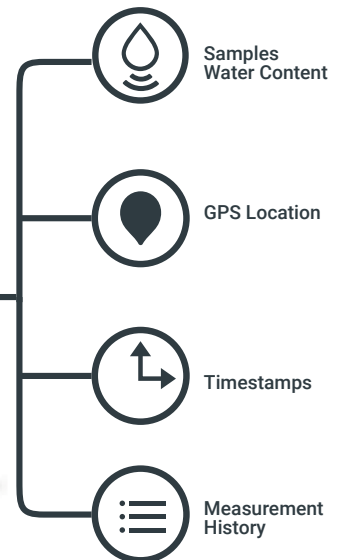
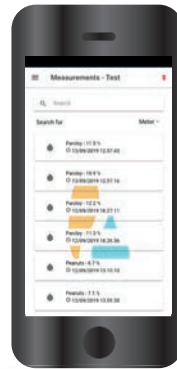
C-Pro is a new pocket-sized digital moisture meter that delivers consistent results. The grain or seed is ground and compressed in a single operation, which ensures state-of-the-art measurement of the sample's water content.

Measuring range (Moisture): 5 to 50% depending on crop type
Operating range (Temperature): 0 to 50 °C
Resolution: 0.1% moisture
Temperature compensation: Automatic
Weight including case: 2 kg
Dimension: 13x21x8 cm
Battery: 9 V Alkaline
Display: High resolution color display
Accuracy: Better than +/- 0.25% in normal moisture range by using average and calibration adjustments

SA MOISTURE CONNECT Keeps track of your measurement history



SA Moisture Connect



With the new C-Pro we have developed a special app that allows you to obtain GPS locations, timestamps, notes and images for each measurement and to keep track of your measurement history. It's truly handier and more convenient than ever before.

APP FEATURES

- Sync measurements from the device to the app
- Low-energy Bluetooth connection
- Track GPS location for each measurement
- Track time of measurements
- Add images and notes to measurements
- Connect to multiple devices



AgroLog 
BY SUPERTECH AGROLINE

Supertech Agroline ApS
Maltgoerervej 7
5471 Soendersoe, Denmark

Phone: +45 6481 2000
Email: info@supertech.dk
www.agrolog.io